

Athos™ Dosys RFID

RFID Smart cabinets for managing high-value medical devices



Athos Dosys RFID Cabinet is the best way to ensure real-time control and traceability of high-cost surgical products



Athos™ Dosys RFID

RFID Smart Cabinets

The Athos Dosys RFID is a Smart Cabinet with controlled access and based on RFID technology indicated for the management, and control of medicines or medical devices of high cost or with a high requirement for the patients traceability.

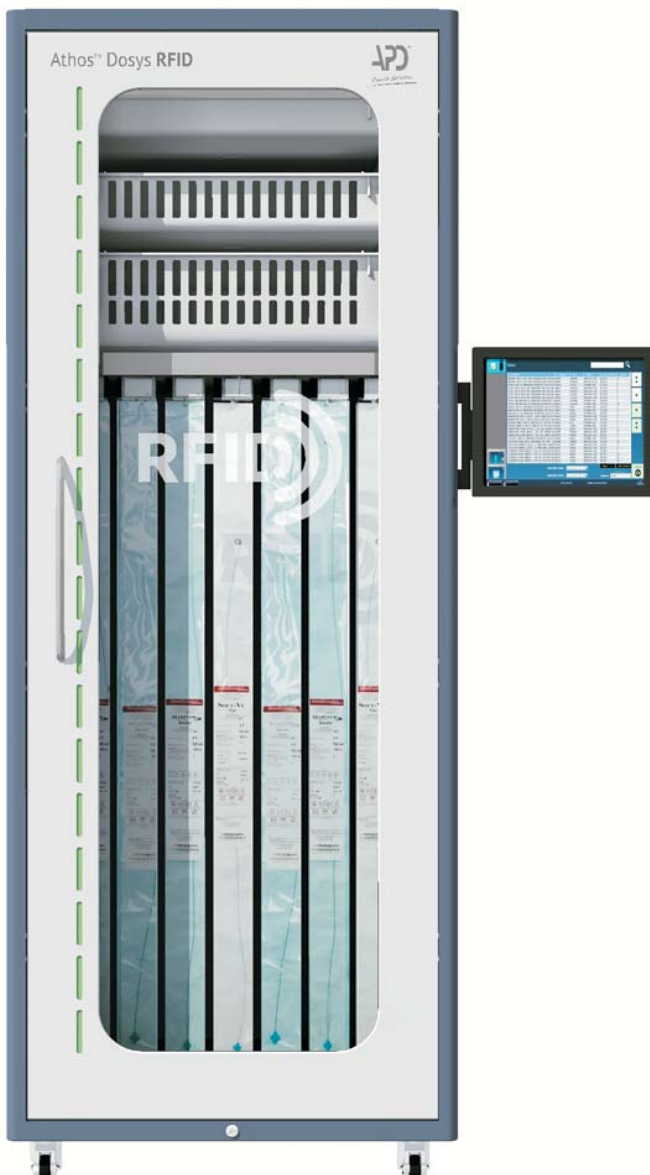
The Cabinet and its associated software, Athos Track, have connectivity to the centralized management system of the Hospital that allows the total automation and traceability of the stored material management processes, 24/7.

Quicker ROI for the Hospital through:

- Enhanced control of expiration dates
- Real time control of the stock of any high cost material
- Significant decrease of material losses
- Elimination of stock-out situation

New and more efficient management models

- Allowing the hospital to allocate products on deposit by the suppliers until the actual use of the material.



Traceability

Registration of both dispensation and return movements, automatic stock management in real time and detailed control of expiration dates.



Athos TRACK Software Suite.

With an intuitive interface through a touch screen specially designed for the use of the healthcare professionals.



Access Control.

User identification and track of all material movements in the Cabinet.



Cost allocation.

To the patient or to a particular cost center.



Access to information.

Web-based application to query information from any Device, anywhere, anytime. Automatic generation of replacement orders



Management Reports.

Comprehensive report of the average intervention cost per patient, per operation of per surgeon. Control of suppliers. Allowing the healthcare organization to manage its purchases more efficiently.



Control of suppliers.

Allowing the healthcare organization to manage its purchases more efficiently.



Integrations.

With other Hospital Corporate Systems.



Ergonomics.

Interior LED lights and interior panels with removable trays.



Alerts.

Light and sound alert system.



Contingency System.

Manual opening and possibility to incorporate a UPS unit

 **Athos™ Dosys RFID**
RFID Smart Cabinets

Configurations and accessories

The internal design of the cabinet is 100% flexible adapted to the real needs of the area where it will be operated.

Trays and shelves



Suitable for hemodynamics

Suitable for ophthalmology, traumatology and plastic surgery

Catheter holder

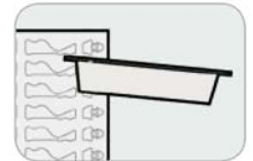
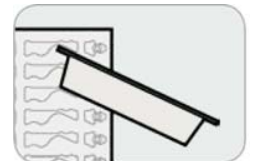


Suitable for interventional radiology area

Separators



Ideal to optimize space



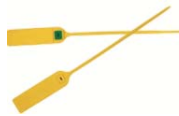
Accessories



UPS



RFID printer



Clamps

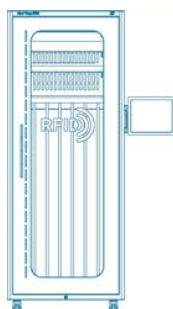


RFID tags and label holders

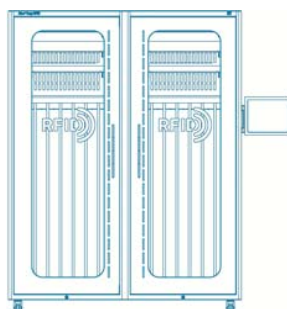


Temperature probes

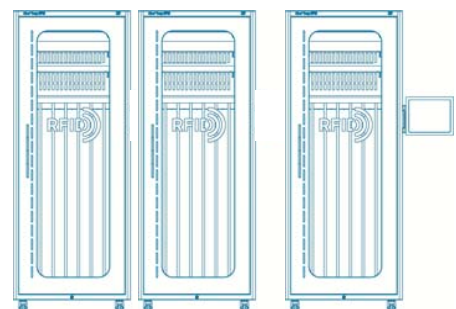
Scalable Solution



Simple



Double



Scalable

Expands the total storage space by installing additional cabinets connected to the base unit.



Athos™ Dosys RFID

RFID Smart Cabinets

RFID Cabinet technical specifications

Mechanics	
Exterior dimensions	Height: 2060 mm (without wheels) Width: 800 mm Depth: 580 mm
Weight	150 Kg
Electrical	
Supply voltage	220 Vca
Door opening	Controlled by MIFARE reader and electric lock
Unlock in case of failures	Mechanical key for manual opening.
Electromagnetic compatibility	Compliance with EMC regulations
Identification compatibility	UHF RFID tags with EPC GENII code
Access identification	By fingerprint, proximity card,
Alerts	Luminous and acoustic
Conectivity	
Communication Interface	Ethernet con ATHOS TRACK Web
Integration	HIS / HL7 Protocol (ATHOS DOSYS System)
Certifications	
EN 61010-1 : 2001 EN 61326 : 2006 IEC 55011 : 1998 EN 61000-4-2 : 2001 EN 61000-4-3 : 2002 EN 61000-4-4 : 2004	EN 61000-4-5 : 2001 EN 61000-4-6 : 2003 EN 61000-4-11 : 2004 EN 61000-3-2 : 2000 EN 61000-3-3 : 2002 EN 61000-3-11 : 2000
Operation range	
Operating temperature	>0°C y <40°C
Humidity of the air	Up to 95% HR
Effect of ambient light	Possibility of blind door for photosensitive material. It does not affect the content, as it is protected by the external structure of the cabinet. Interferences with other materials.



Contact us

PBSA

www.pbsa.co.za

support@pbsa.co.za
sales@pbsa.co.za

Tel: +27 11 516 9420

78 Kyalami Boulevard
Kyalami Business Park
Johannesburg
Gauteng
1685, ZA