

## CMC WRAPS

CMC WRAPS represents the most comprehensive set of solutions available to the graphics industry.

## CMC SEALING

CMC offers a full variety of sealing with all film types to present the product in the best and most cost-effective approach.



**CS**  
(Conventional Sealing)



**SS**  
(Side Sealing)



**TSS**  
(Top Side Sealing)



**HS**  
(Header Sealing)



**DBHS**  
(Double Bag Header Sealing)



**GS**  
(Glue Sealing)



**STS**  
(Stretch Sealing)



**PS**  
(Printing Sealing)



**WS**  
(Window Sealing)



## PC ADD LINE CONTROLLER

PC ADD is CMC developed Line Controller available in all main international languages for:

### Document handling

- Barcode readers
- (matching, tracking, sequence control, no read, lot control)
- Addressing
- Sorting
- Read & Print

### Data Integrity

- Reports
- Logs
- Database update

### Management of File-based production

- Selectivity
- Zip-Code breaks
- Printing and despatch labels for the carrier
- Mixed/small bundle management

### Management of CMC line devices

- Feeders (Selectivity, No stop system, Flip-Flop system, Live back up, etc)
- Stackers/Traying Systems
- Rejects
- Printers (up to 8 printheads simultaneously, R&P)



## PC REGIA SYSTEM

PC REGIA is CMC-developed remote supervision controller for multiple CMC lines capable of managing splitting, merging multiple complex jobs across several PC ADD controllers.

- Duplicates checking between lines
- Up to 10 CMC inserting lines
- Monitoring lines in real time
- Up to 10 different jobs at the same time
- Job assignment and management (i.e. duplicates checking and reprinting)
- Data and Mail stream Integrity
- Web-based global statistics

## CMC 2800-3200

### TECHNICAL SPECIFICATION

	CMC 2800	CMC 3200
Minimum Format *	100x120 mm	100x120 mm
Maximum Format **	300x430 mm	300x430 mm
Maximum Thickness	40 mm / 80 mm (optional)	40 mm / 80 mm (optional)
Film Thickness	10-100 µm	10-100 µm
Film Type	Recycled, Biodegradable, PE, PP, PVC, OPP	Recycled, Biodegradable, PE, PP, PVC, OPP
Maximum mechanical speed	25.000 pieces/hour	30.000 pieces/hour

\*Special kits available for wrapping smaller products

\*\* Wide body machines available for larger products and/or special formats

weinspirethefuture.com

# CMC 2800-3200

Film Wrapping Machine



C.M.C. s.r.l.  
Via C.Marx 13/c  
06012 Città di Castello,  
Perugia - Italy

Tel. +39 075 8518006  
Fax +39 075 8511084

cmcmachinery.com  
info@cmcmachinery.com



# CMC 2800

The high speed flexible film wrapping machine

The CMC 2800 is the perfect film wrapping system for the 21st century. This innovative fully servo controlled system not only provides ultimate flexibility, but assures minimal set-up and changeover times, reduced maintenance through fewer moving parts, expandability through modular design; thus improving productivity and reducing cost of ownership.

- Servo driven shuttle feeder for rigid and thick products.
- Sliding and pivoting Servo driven rotary vacuum drum feeder for the greatest feeding flexibility.
- Optional first page opening devices for inserting products into main product.
- Thermo regulated cross and longitudinal sealers. Optional sealers for all available film types, including polypropylene films and biodegradable films. Optional side-sealing.

- Dynamic electronic servo driven cross sealer allows for high speed production.
- Optional pre-printed film registration and labeling systems.

The advanced controls and product tracking of the CMC 2800 make it the ideal solution for the most complex "intelligent" jobs requiring reading, ink jet printing, selective feeding, matching, sorting, integration to upstream and downstream lines. Full system integrity is ensured with the addition of PC\_Add Line Controller.

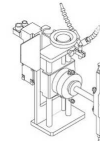
## Optional Equipment

CMC Film Wrapping Systems are available with the widest range of features to solve the widest range of applications.

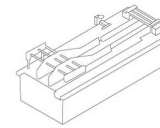
Countless options are available for: feeder types, sealing methods, input channels, in-line printing/labeling, stackers, output solutions etc...

CMC has long experience in "in-line" applications to connect the film wrapping machines to a large variety of third-party production systems: saddle stitchers, book binders, gripper conveyors, sheeters, digital printers, numbering systems, etc. Credit the "well known" flexible attitude and knowledge of CMC.

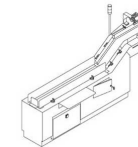
Our unique "gap recovery" feature makes our systems the most adaptable in the industry. "Gap Recovery" is an electronically servo controlled subsystem that prevents unfilled film bags on the line, even in cases of product gaps from the third-party system. This feature not only prevents wasted film, it also limits machine stops leading to more efficient and increased production.



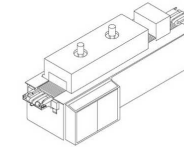
1st page Opener



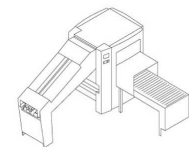
Folder



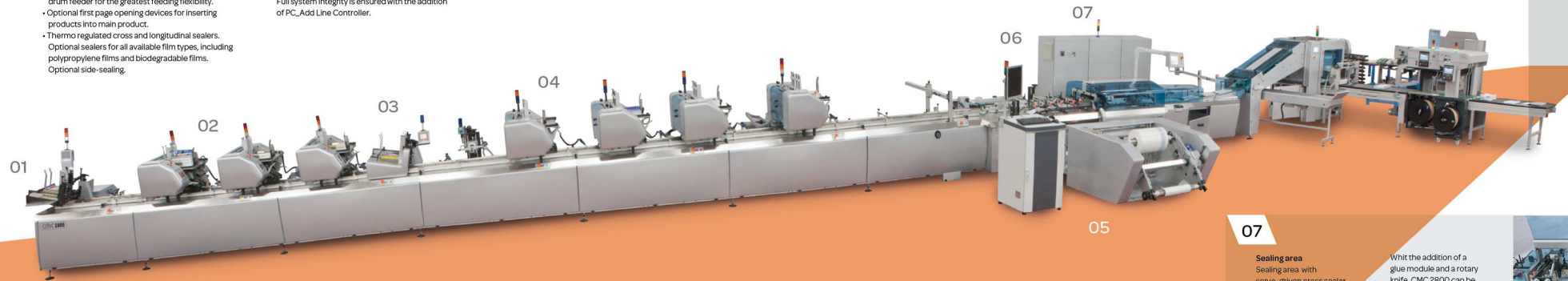
Bulk Loader



Shrink Tunnel



Stackers



01

**Shuttle feeder**  
Servo-driven shuttle feeder for feeding rigid and thick products



02

**Insert feeder**  
Rotary feeder with "singulating disc" for "in-line" high speed feeding of folded products: no "bump and go"



03

**Mouse-me shuttle feeder**  
"Mouse-me" stand alone shuttle feeder on wheels. It can be easily moved anywhere along the raceway.



04

**Mouse-me rotary feeder**  
Mouse-me stand alone rotary feeder on wheels. It can be easily placed anywhere along the raceway. It features pivoting capacity



05

**Film unwinder**  
CMC external film unwinder with expansion blocks and hydraulic lifter



06

**Film wrapping section**  
A "wide body" version available for large products or newspaper wrapping

07

**Sealing area**  
Sealing area with servo-driven cross sealer, fixed-block longitudinal sealer and self-adjustable top belt. The CMC 2800 features an additional cross sealer.

With the addition of a glue module and a rotary knife, CMC 2800 can be delivered in CMC ONE version which offers the capability of paper and film wrapping

